



HON YU

汉羽工业缝纫机
HON YU INDUSTRY SEWING MACHINE

HY-801

削皮机
Leather skiving machine



HY—801 削皮机使用说明

一、用途

本机为皮革制品的必备设备、广泛用于皮鞋、皮衣、皮袋、皮带和皮手套等的各种天然革、PU革零件之折边的边缘坡口和均匀修薄加工。

二、特点

- 1、本机设计精巧、结构紧凑；调节灵活。使用方便；性能优良。
- 2、采用低噪音精密轴承，零件制作精细，整机噪音低。
- 3、备有磨刀装置。磨刀由离合器手柄控制、操作简单、节省能耗。
- 4、设有平皮带自动张紧装置，转动安全可靠。
- 5、附有自动除屑装置。
- 6、易损件更换方便。

三、主要技术参数

- 1、电机：功率.370-550W；转速.1400rpm
- 2、圆刀规格： $\Phi 118 \times \Phi 114 \times 54$ （mm）
- 3、圆刀转速：1270rpm
- 4、圆刀轴向位移：30（mm）
- 5、送料轮转速：62、99、132rpm
- 6、送料轮速度：9274、14766、19688mm/mm
- 7、削皮宽度：10-50mm
- 8、磨刀砂轮： $\Phi 70 \times \Phi 20 \times 8$ （mm）
- 9、噪音：小于60dB（A）
- 10、整机重量：40kg

四、安装、使用与调整

1、安装

本机经过严格测试检验，出厂时处于完好状态，一经安装妥当便可正常工作。安装时，请安装好机架台板，再用铰链（1-46，1-47）将机器安装在台板上，然后装上符合要求的电机，配上三角皮带，正式使用前应先通电试机，当确认圆刀转向正确（从刀端方向看，圆刀顺时针方向旋转）整机运转正常后方可投

入使用。

2、使用与调整

1)、根据皮革加工所要求的厚度不同,对压板(1-16)的高度进行调整,当皮革需要均匀减薄时,请使用压板A;当皮革要求坡口时,请使用压板B;当皮革要求折角时,请使用压板C;削皮宽度,用定规(1-31)控制。

2)、当需要提高或降低送料速度时,可通过改变三角皮带在皮带轮上的位来实现。

3)、送料轮与圆刀的间隙由手柄(3-64)和(3-67)调节;调节(3-67)可使送料轮与圆刀在各处的间隙均匀;调节(3-64)可使送料轮与圆刀的间隙减小或增加,送料轮不得与圆刀相碰。

4)、圆刀刃不锋利时,可操纵离合手柄(2-50)带动磨刀砂轮架使砂轮转动,转动调节螺丝(3-36)刃磨刀口。

5)、圆刀磨损后,拧松螺母(3-34),可转动手柄(2-30)使刀轴向左移动,圆刀刃口与压板在平面的距离保持在0.1~0.5为宜。然后拧紧螺母(3-34)方可正常工作。

6)、使用随机工具(4-4),调整(推或拉)抛屑装置(2-1)在圆刀内的轴向位置,可获得要求的抛屑效果。

五、维护

- 1、操作使用前,应检查机件是否完整,各转动部位是否转动灵活;
- 2、定期对各运转部位加注润滑油;
- 3、圆刀使用磨损后,应及时修磨;
- 4、发现运转异常或噪声突然增大,应立即停机检查;机件磨损后应及时修理、更换;保持机器清洁。

General Description and Instruction

I .Application

This machine is a special equipment for making of leather goods . It is Widely used for the shaping of slope edge and the even shiving of wariuous Parts for Ieather material and PU material goods such as leather shoes , Gloves,bags,wallet.belt,macket and suitcase,etc.

II.Features

1.Rational design,compact in structure,easy operation,simple adjustment and good performance.

2.Low noise level because of adoption of low noise precision bearings and making at utmost care.

3.With knife sharpener.Driven through clutch level, easy operation and saving on energy.

4.With autonatic belt stretcher,safety and reliability in criving.

5.With automatic of spare parts.

6.Easy replacement cleaning.

III.Main specifications

1.Motor:370–550W,1400rpm

2.Knife size: $\Phi 118 \times \Phi 114 \times 52$ (mm)

3.Knife speed:1270rpm

4.Knife axial displacement:30mm

5.Feed wheel speed:62,99,132rpm

6.Feeding speed:9247,14766,19688 mm/min

7.Skiving width:10–50mm

8.Abrasive wheel size: $\Phi 70 \times \Phi 16 \times 8$ (mm)

9.Noise level:<60dB(A)

10.Weight:40kg

IV.Instllation and adjustment

1.Installation

When its being installed,first assemble the stand and work table,then fix the machine on the table by two pairs of hinge,lastly fix the desired motor on the rear side of the table and fit up V.belt.Before being put into operation,it must be trialoperated and it is certain that the turn direction of the knife is

correct(seeing knife rightwards it turns clockwise)and the machine functions normally.

2.Adjustment

It is necessary to make some adjustments according to the skiving requirements.

1).When the desired skiving thick of the parts for leather goods varies, please adjust the height of presser foot(1-16)correspondingly.In the case of even skiving and slope skiving,please respectively use presser foot A and presser foot B;and when a U shape skiving is required,please use presser foot C.Skiving width can be adjusted through the ruler(1-31)

2).When it is necessary to change the feeding speed,please change the position of the V.belt on the belt pulley.

3).The clearance between the feed wheel and the knife can be adjusted by turning the handles (3 - 64&3 - 67) . When equal or different clearance along the knife edge is required,please turn the handle(3 - 67).Turning the handle(3 - 64)makes the clearance equally decreased or increased. Be sure that feed wheel can' t collide with knife.

4). When knife is blunt,set the clutch leveler at work position,and then turn the screw(3 - 36)slowly to grind the knife.

5).After the knife is worn , move the knife axis leftwards slightly by turning the knob . The proper distance between the right surface of the presser foot and the knife edge is 0.1 - 0.5mm.

6).Through pushing or pulling the cleaner(2-1)by accessory(4-4) , the axial position of cleaner in the knife can be adjusted and the desired cleaning result for different material scrap can be got.

V.Maintenance

1.Before operation,be sure the machine is in a good condition.

2.Periodically feed oil on the moving parts.

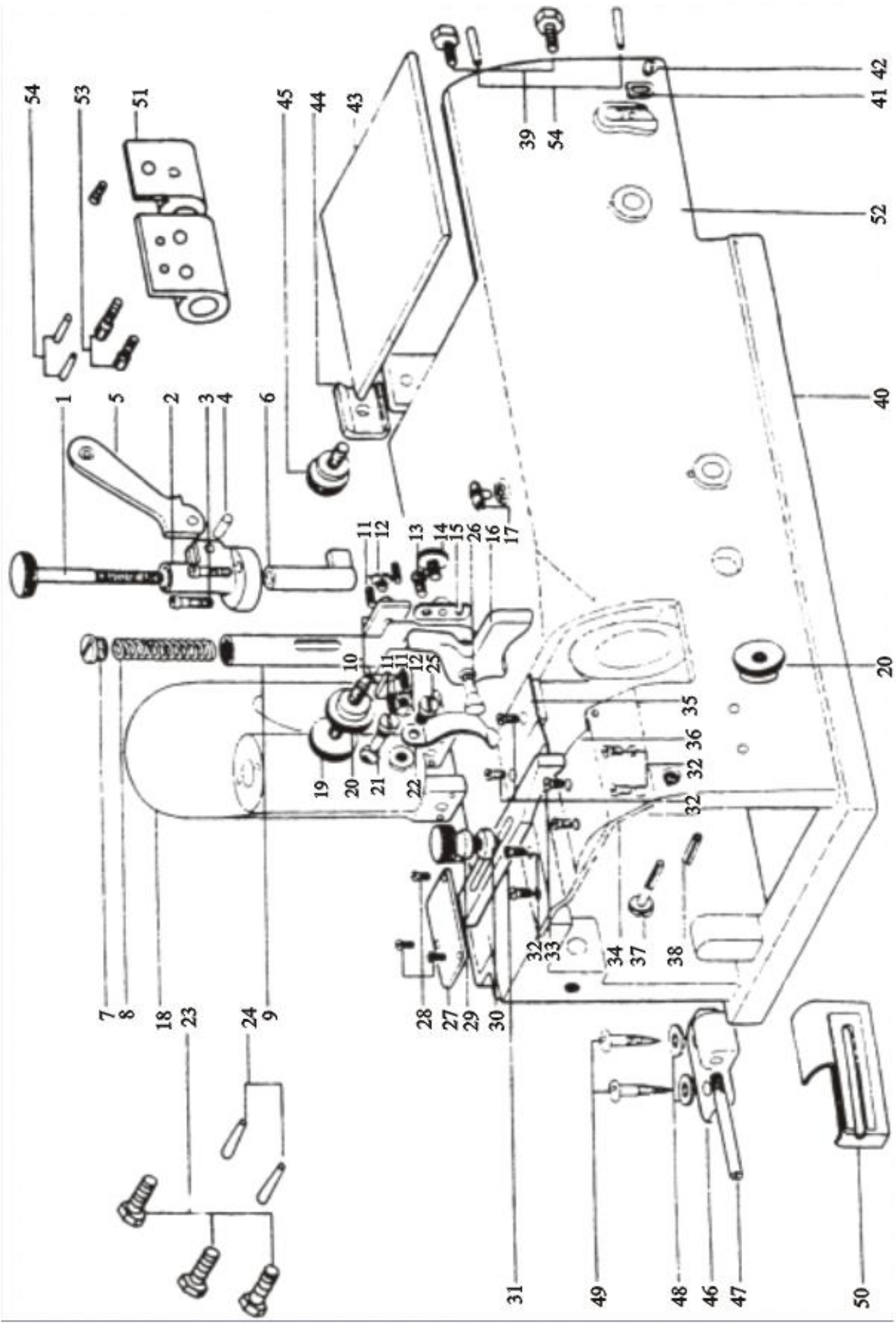
3.sharpen the knife when it is blunt.

4.If there is abnormal noise or bard runing of the machine , it must be stopped and checked at once . If necessary , please have it repairde by a qualified technician.Don' t go into operation until the machine has arrived at the good condition.

5.keep the machine clean.

零件分解图

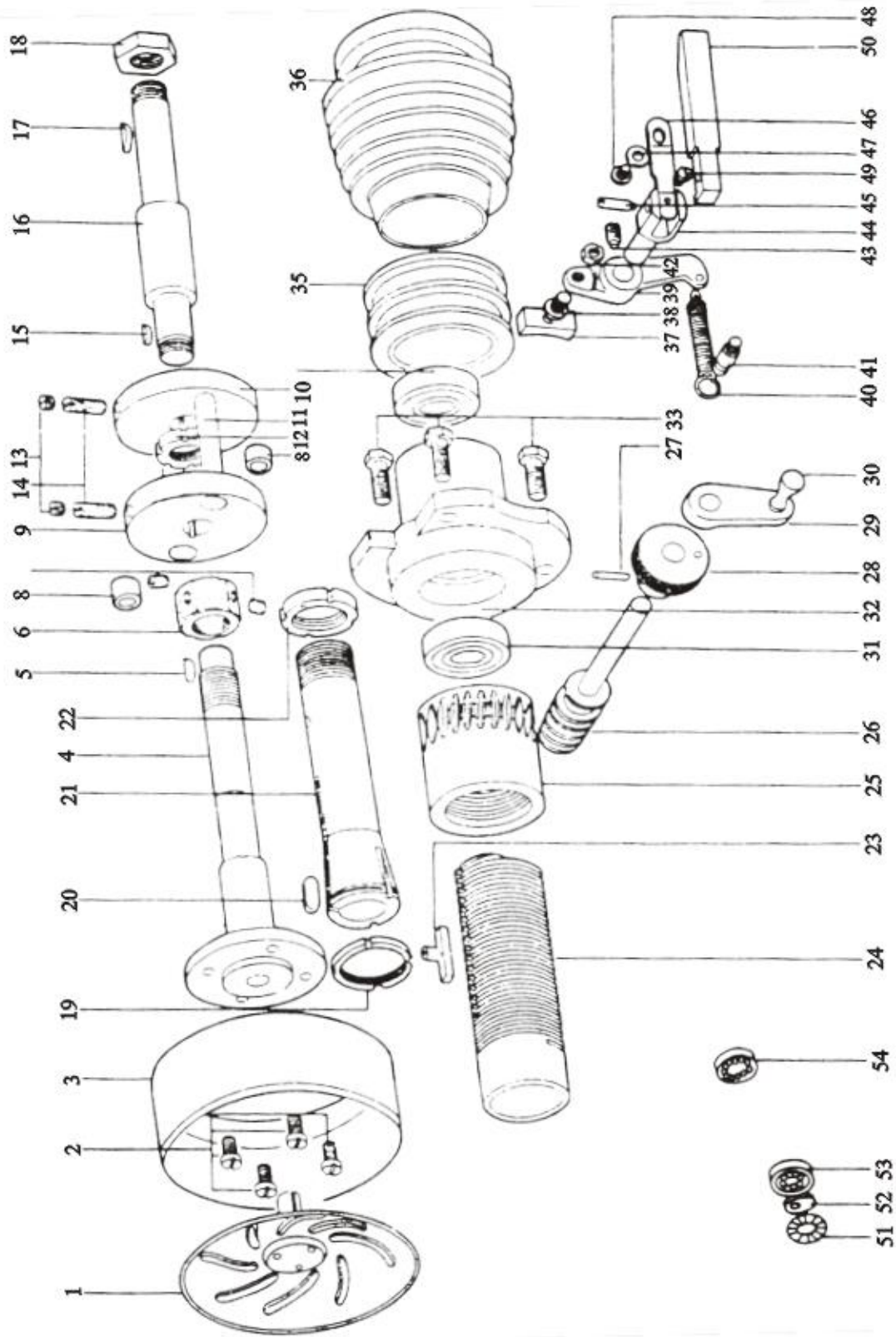
1. PRESSER FOOT AND OUTER ATTACHMENTS



序号	名称	Description	Qt.req.
1.1	调压螺钉	Presser bar adjusting screw	1
1.2	扳手支架	Presser bar lifter bracket	1
1.3	支架螺钉	Presser bar lifter bracket screw	2
1.4	扳手柄	Presser bar lifter pin	1
1.5	压杆扳手	Presser bar lifter	1
1.6	压杆提升杆	Presser bar lifter lever	1
1.7	压杆螺塞	Presser bar cover screw	1
1.8	压杆簧	Presser bar spring	1
1.9	压杆	Presser bar	1
1.10	侧压板	Presser foot side plates	2
1.11	侧压板调整螺钉	Presser foot side plates adjusting screws	4
1.12	侧压板螺钉	Presser foot side plates screws	2
1.13	压脚轴钩板销钉	Presser foot shaft hook metal hinge screw	1
1.14	钩板固定螺钉	presser foot shaft hook metal set screw	1
1.15	压脚轴钩板	presser foot shaft hook metal	1
1.16	压脚(50)mm	Presser foot 50mm	1
1.17	油杯	Oil cup	1
1.18	弯管	Arm	1
1.19	压脚调节螺钉	Presser foot adjusting screw	1
1.20	调节螺钉螺母	Presser foot adjustabe screw nuts	2
1.21	压杆簧销	Presser bar spring pin	1
1.22	压脚簧	Presser foot spring	1
1.23	内六角螺钉	Inner hexagonal screw	3
1.24	锥销	Taper pin	2
1.25	压脚簧螺钉	Presser foot spring screw	1
1.26	压脚轴	Presser foot shaft	1
1.27	蜗轮蜗盖	Worm shamber plate	1
1.28	螺钉	Screws	3
1.29	定规紧定螺钉	Ruler set screw	1
1.30	垫圈	Ruler set screw washer	1
1.31	定规	Ruler	1
1.32	护板螺钉	Slide plate screws	6
1.33	滑板螺钉	Slide plate screws	2
1.34	左护板	Slide plate A	1
1.35	右护板	Slide plate B	1
1.36	滑板	Slide plate C	1
1.37	螺钉	Waster feeder screw	1
1.38	弹簧销	Waster feeder stop pin	1
1.39	六角头螺钉	Hexagon slotted screw (Base plate)	2
1.40	机座	Bed	1
1.41	挡片	Belt cover plate	1
1.42	螺钉	Belt cover plate screw	1
1.43	皮带罩板	Belt cover lid	1
1.44	挡板	Belt cover lid stopper	1
1.45	定规紧定螺钉	Ruler set screw	1
1.46	铰链	Hinges	2
1.47	铰链销	Hinge pins	2
1.48	垫圈	Hinge set screw washers	4
1.49	螺钉	Hinge set screws	4
1.50	输送机(组)	Waste feeder metals(SET)	1

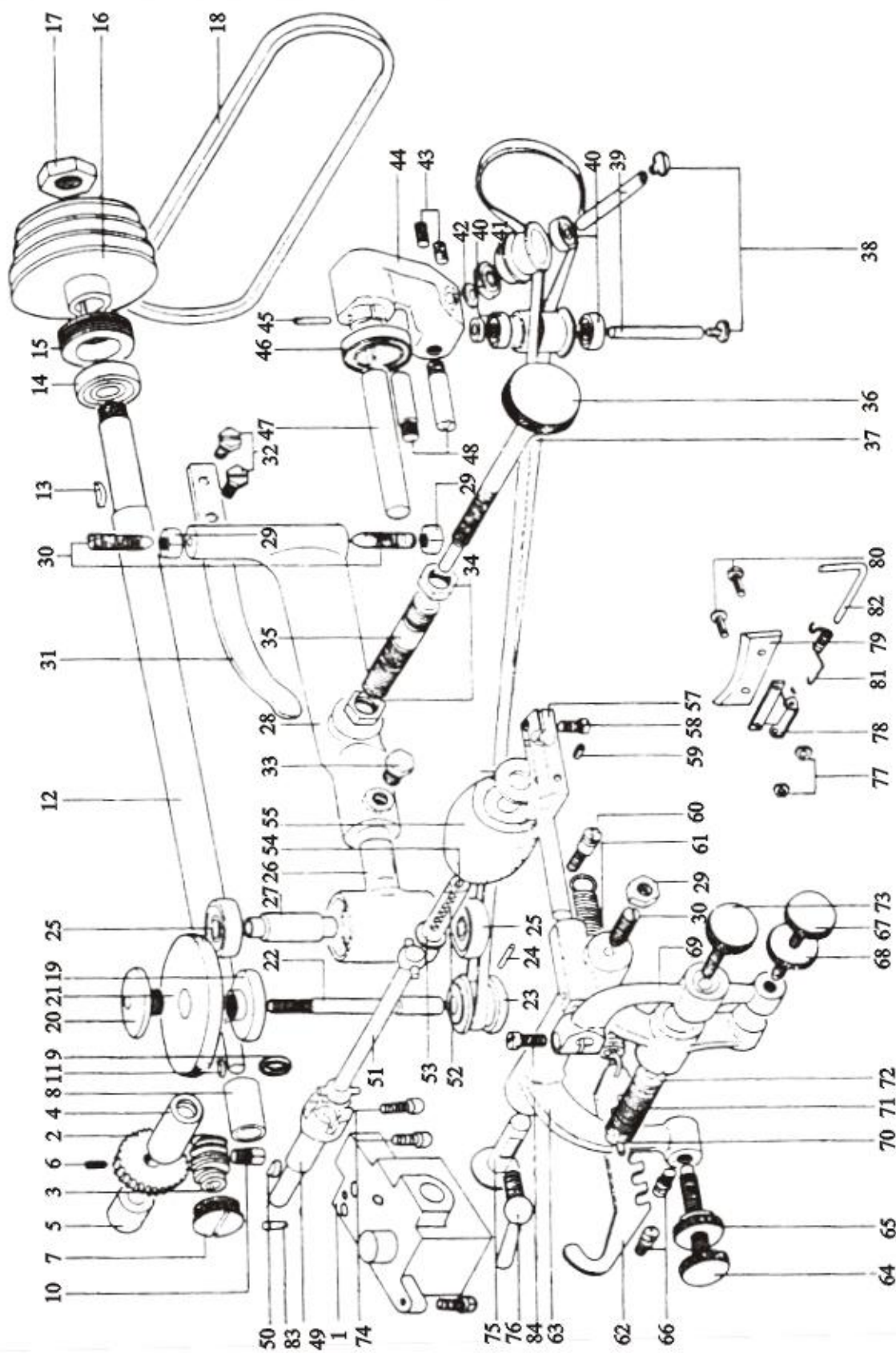
序号	名称	Description	Qt.req.
1.51	轴承座	Fransmission shelf	1
1.52	座板	Basic plate	1
1.53	定位螺钉	Set screw (Transmission shalt)	2
1.54	锥销	Tape pin	4

2. KNIFE AND RELATED PARTS



序号	名 称	Description	Qt.req.
2.1	刀盖	leather peeled cover	1
2.2	圆刀紧固螺钉	Knife set screws	4
2.3	圆刀	Knife	1
2.4	刀轴	Knife shaft	1
2.5	刀轴键	Knife shaft key	1
2.6	刀轴螺母	Knife shaft nuts	2
2.8	橡胶套	Rubber bushings	2
2.9	左联轴器座	Puller shaft flange holder	1
2.10	右联轴器座	Pulley shaft flange	1
2.11	联轴器销轴	Flange shafts	2
2.12	联轴器螺母	Pulley shaft flange nut	1
2.13	联轴器螺钉 (B)	Pulley shaft flange screws(B)	2
2.14	联轴器螺钉 (A)	Pulley shaft flange screws(A)	2
2.15	半圆键	Pulley shaft key(small)	1
2.16	带轮轴	Pulley shaft	1
2.17	半圆键	Pulley shaft key	1
2.18	六角螺母	Hexagonal nut(A)	1
2.23	方牙管平键	Knife shaft lead pipe key	1
2.24	方牙管	knife shaft lead pipe	1
2.25	刀轴蜗轮	Knife shaft worm wheel	1
2.26	刀轴蜗杆	Knife shaft worm	1
2.27	锥销	Taper pin	1
2.28	圆刀调节按钮	Knife adjusting knob	1
2.29	圆刀调车手柄	Knife adjusting handle	1
2.30	手柄把	Knife adjusting handle Knob	1
2.31	带轮轴轴承	pulley shaft bearings	1
2.32	带轮轴轴承座	Pulley shaft metal	1
2.33	轴承座螺钉	pulley shaft metal screws	1
2.34	带轮轴轴承	Pulley shaft bearing	1
2.35	离合器	Clutch	1
2.36	带轮	Pulley	1
2.37	离合器滑块	Clutch slide block	1
2.38	滑块螺钉	Clutch slide block screw	1
2.39	离合器摇臂	Clutch arm	1
2.40	离合器弹簧	Clutch spring	1
2.41	弹簧挂销	Clutch spring hook	1
2.42	滑块螺钉螺母	Clutch slide block screw nut	1
2.43	离合杠杆螺钉	Clutch lever screw	1
2.44	离合杠杆轴	Clutch lever shaft	1
2.45	离合摇臂螺钉	Clutch arm screw	1
2.46	离合杠杆簧	Clutch lever spring	1
2.47	垫圈	Clutch lever spring washer	1
2.48	离合杠杆簧螺轴	Clutch lever spring hinge screw	1
2.49	离合杠杆簧螺轴	Clutch lever spring screw	1
2.50	离合杠杆	Clutch lever	1
2.53	轴承	Bearing	1
2.54	轴承	Bearing	1

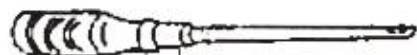
3. GRINDSTONE AND ROLLER RELATED PARTS



序号	名称	Description	Qt.req.
3.1	蜗轮箱	Worm wheel box	1
3.2	主轴蜗轮	Main shaft worm gear Wheel	1
3.3	主轴蜗杆	Main shaft worm gear	1
3.4	送料轮驱动轴	Roller driving shaft Metal	1
3.5	送料轮驱动轴	Roller driving shaft metal(2)	1
3.6	主轴蜗轮螺钉	Main shaft worm gear Wheel screw	1
3.7	蜗轮箱螺塞	Main shaft worm gear Chamber cover screw	1
3.8	主轴前轴套	Main shaft front bushing	1
3.9	蜗轮箱油封	Main shaft worm gear chamber oil seal	1
3.10	蜗轮箱螺钉	Main shaft worm gear Chamber screw	1
3.11	主轴键(1)	main shaft key(1)	1
3.12	主轴	main shaft	1
3.13	主轴键(2)	Main shaft key(2)	1
3.14	主轴轴承	main shaft bearing	1
3.15	主轴轴承护圈	Main shaft bearing holder screw	1
3.16	主轴皮带轮	Main shaft pulley	1
3.17	六角螺母B	Hexagonal nut B	1
3.18	主轴皮带	Main shaft belt	1
3.19	砂轮下压板	Grindstone set screw	1
3.20	砂轮上压板	Grindstone set screw nut	1
3.21	砂轮	Grindstone	1
3.22	砂轮轴	Grindstone shaft	1
3.23	砂轮轴带轮	Grindstone shaft pulley	1
3.24	弹簧销	Grindstone shaft pulley taper pin	1
3.25	砂轮轴轴承	Grindstone shaft bearing	1
3.26	轴承托架	Grindstone shaft bracket	1
3.27	轴承轴	Grindstone shaft bearing roller	2
3.28	轴承托架臂	Grindstone shaft bracket arm	1
3.29	顶销螺母	Grindstone shaft bracket arm center screw nuts	1
3.30	顶销	Grindstone shaft bracket arm center screws	3
3.31	托架臂弹片	Grindstone shaft bracket arm spring	1
3.32	弹片螺钉	Grindstone shaft bracket arm spring screws	2
3.33	托架架定螺钉	Grindstone shaft bracket screw	
3.34	螺牙管螺母	Grindstone adjusting screw pipe nuts	2
3.35	螺钉管	Grindstone adjusting screw pipe	
3.36	砂轮调节螺钉	Grindstone adjusting screw	1
3.37	砂轮轴皮带	Grindstone shaft belt	1
3.38	皮带导轮螺钉	Belt guide pulley screws	1
3.39	皮带导轮轴	Belt guide pulley shaft	2
3.40	皮带导轮轴承	Belt guide pulley bearings	4
3.41	皮带导轮	Belt guide pulley	2
3.42	导轮垫片	Belt guide pulley washers	2

序号	名称	Description	Qt.req.
3.43	皮带导轮轴螺母	Belt guide pulley shaft screws	2
3.44	皮带导轮座	Belt guide bracket	1
3.45	锥销	Belt guide bracket taper pin	1
3.46	弹簧	Belt guide bracket spring	1
3.47	皮带导轮座轴	Belt guide bracket shaft	1
3.48	调节螺钉	Belt guide bracket turing stoppers	2
3.49	送料轮驱动轴	Roller driving shaft	1
3.50	驱动轴键	Roller driving shaft key	1
3.51	驱动轴接杆	Roller driving shaft joint	1
3.52	油毡	Roller shaft oil wick	1
3.53	送料轮轴	Roller shaft	1
3.54	油封塞	Roller shaft oil seal plug	1
3.55	送料轮	Roller	1
3.56	垫圈	Roller washer	1
3.57	送料轮架	Roller bracket	1
3.58	送料轮轴螺钉	Roller shaft screw	1
3.59	螺钉	screw	1
3.60	去屑板轴螺钉	Waste clear metal shaft screw	1
	弹簧挂钩	spring hooks(2)	
3.61	送料轮架弹簧	Roller bracket arm spring	1
3.62	弹簧挂钩板	Roller bracket arm spring hook metal	1
3.63	送料架臂	Roller bracket arm	1
3.64	送料架臂螺钉	Roller bracket arm adjusting screw	1
3.65	送料架臂螺钉螺母	Roller bracket arm adjusting screw nut	1
3.66	弹簧挂钩	Roller bracket arm spring hooks(1)	2
3.67	回转臂调整螺钉	Roller bracket turning arm adjusting screw	1
3.68	调整螺钉螺母	Roller bracket turning arm adjusting screw nut	1
3.69	回转臂	Roller bracket turning arm	1
3.70	回转臂弹簧挡销	Roller bracket turning arm spring stopper	1
3.71	回转臂弹簧	Roller bracket turning arm spring	1
3.72	弹簧调节螺母	Roller bracket turning arm spring nut	1
3.73	弹簧调节螺钉	Roller bracket turning arm spring adjusting screw	1
3.74	定位螺钉	Set screw	3
3.75	回转臂轴销	Roller bracket arm center pin	1
3.76	轴销螺钉	Roller bracket arm center pin screw	1
3.77	螺母	Waste clear metal leather nuts	2
3.78	去屑板	Waste clear metal	1
3.79	去屑板皮革	Waste clear metal leather	1
3.80	架定螺钉	Waste clear metal leather screws	2
3.81	去屑板簧	Waste clear metal spring	1
3.82	去屑板轴	Waste clear metal shaft	1
3.83	锥销	Taper pin	1
3.84	螺钉	Roller shaft screws	

4、ACCESSORIES



7

6



A 40m/m
B 30m/m
C 25m/m

序号	名称	Description	Qt.req.
4.1	砂轮修正器	Grindstone dresser	1
4.2	砂轮压板扳手	Grindstone nut spanner	1
4.3	刀轴扳手	Knife shaft spanner	1
4.4	刀内盖取出器	Knife inter cover remover	1
4.5	棒形砂轮	Bar type grindstone	1
4.6	起子(大)	Screw driver large	1
4.7	油壶	Oiler	
4.16A	压脚(50mm)	Presser foot 50 mm	1
4.16B	压脚(30mm)	Presser foot 30 mm	1
4.16X	压脚(平)	Presser foot	1
4.47	铰销	Hinge pins	2
4.46	铰链	Hinges	2
4.48	垫片	Hinge set screw washers	2
4.49	螺钉	Hinge set screw	4
2.29	圆刀调节手柄	Knife adjusting handle	1
2.30	手柄把	Adjusting handle	1



汉羽国际(香港)有限公司

HON YU INTERNATIONAL (H.K.) CO.,LTD.

地址:香港湾仔轩尼诗道139号中国海外大厦10楼D室

Add:Unit D, 10/F, China Overseas Building, 139 Hennessy Road, Wanchai, Hongkong

电话(Tel): +852-3567 4387

传真(Fax): +852-3567 4387

Website:<http://www.honyuco.com>

E-mail:info@honyuco.com